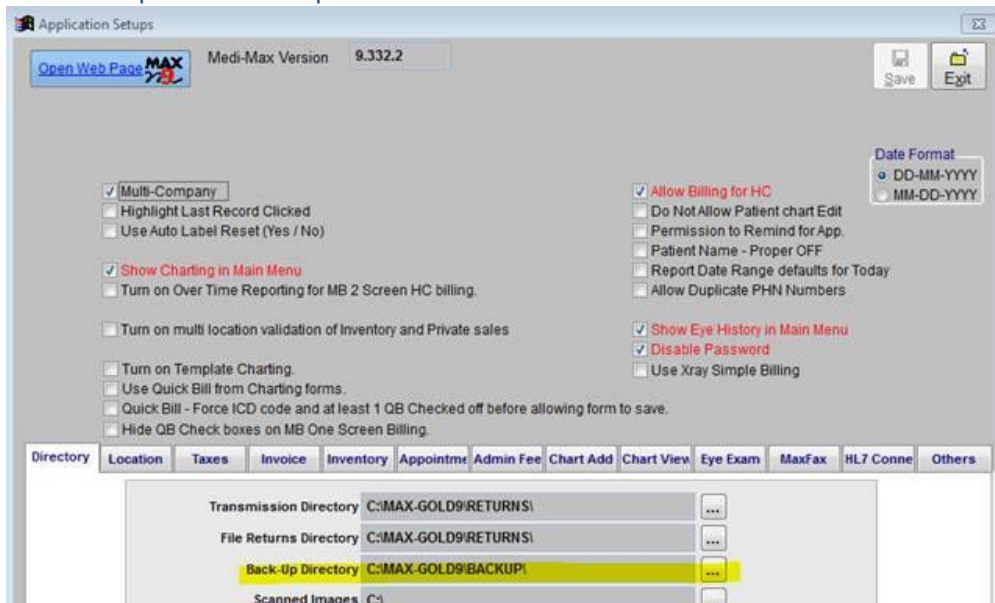



# How to setup the Max-Gold9 Backup

To backup to an external drive you will need to do the following; To change the backup directory do the following.

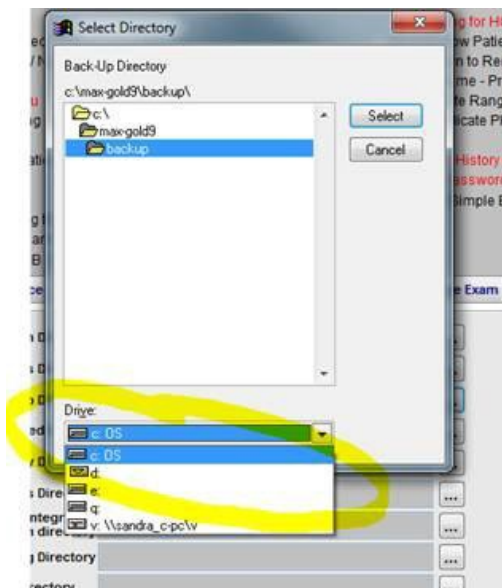
- 1- Create the directory you want to store your backups in. It is best to use short names, spaces and special characters are not allowed. For example, Max\_Backups, or MGC9\_dataBack ...
- 2- Run MaxGold, and from the main menu choose Files → configuration. Enter the master password if required.



- 3- I have highlighted the backup directory in yellow highlighter. To change the path,

click on the  at the end of the backup directory.

- to point to an external Drive, click on the 'Drive' drop down and choose the drive letter for the external device.



- 4- Choose the Drive letter, and the directory and click on 'Select', then Save the changes by Clicking on 'Save' .

Once you have defined where the backup should be created, go to 'Utilities → Maintenance → Backup to Harddrive'

Click on 'Back-Up'

